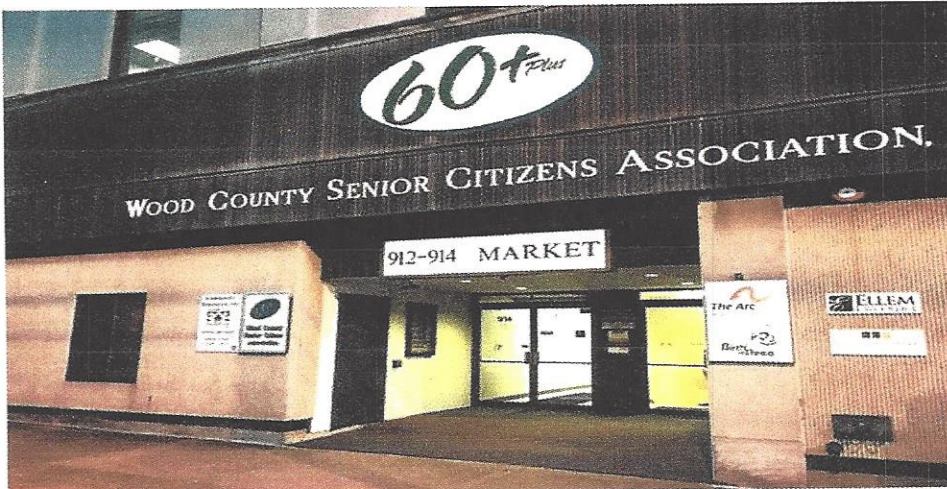


FOR RENT ~ COMMERCIAL

WOOD COUNTY SENIOR CITIZENS ASSOCIATION, INC. MARKET STREET (304) 485-6748



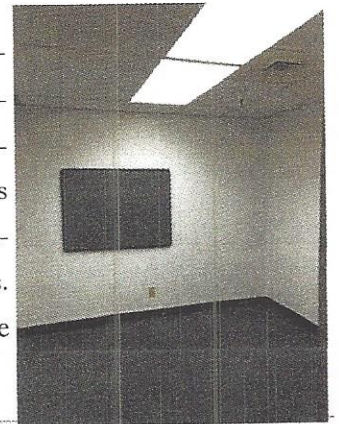
Easy to Locate, Prime Downtown Location: 914 Market Street, Suite 301

****Beautiful 3,000 square foot unit available to suit new tenant. ****

May renovate per needs. Rent includes utilities, but is still negotiable. Accessible building with front and rear entrances. Ample free off-street parking. Secure building. Nice conference room area, with room for two conference rooms, if needed.. Also includes a Library area with built-in bookcases and computer work station. Total of 12-14 separate offices. Telecommunications hub. Detailed maintenance of property five days a week for tenants. Kitchen area with dining space. Fully carpeted, and fresh paint. Closet space storage on-site. **Call for a private tour today; Must see to appreciate!**

\$2, 200 PER MONTH WITH UTILITIES INCLUDED

- Approximately 3,000 square feet of great downtown office or commercial space. Total of 12-14 offices. Nice size equipped kitchen area, with oak cabinets with refrigerator and stove hook-ups. Room for 6 chair dining table.
- Accessible building and elevator, with separate building exits. Accessible parking Private employee exit. Public restrooms. Has locked (key) private employee bathroom.



BUILDING MANAGER AVAILABLE MONDAY THROUGH FRIDAY. WONDERFUL SPACE AND GREAT DOWNTOWN LOCATION. COMMERCIALLY ZONED-BUILDING. GREAT VISIBILITY FOR MARKET STREET SIGNAGE AND AVERY STREET SIGNAGE.

Rental Address: 914 Market Street, Suite 301
Parkersburg, WV 26101

****Adjacent to Wood County Senior Citizens Association, Inc. Multiple businesses in building: Ellem Law; Starkey Law, Douglass Law; Community Resources, Inc., Family Resource Network, The Arc of MOV, etc.***

Please contact: WCSCA Property Mgr.
914 Market Street, Suite 106
Parkersburg, WV 26101

Phone: (304) 485-6748, ext. 107

Email: swatkins@suddenlinkmail.com

OFFICES ARE LARGE WITH MANY MULTI-PURPOSE USES. RECEPTION AREA IS LARGE. WELL MAINTAINED PROPERTY. SECURE BUILDING. MAINTENANCE STAFF AVAILABLE ON SITE MONDAY THROUGH FRIDAY. CONTRACTUAL LEASE AGREEMENT REQUIRED.